

1272 + 951 sqft



26'



2



3



2.5

234 LEGACY HEIGHTS SE, CALGARY AB

# THE CRESSWELL

## \$499,000

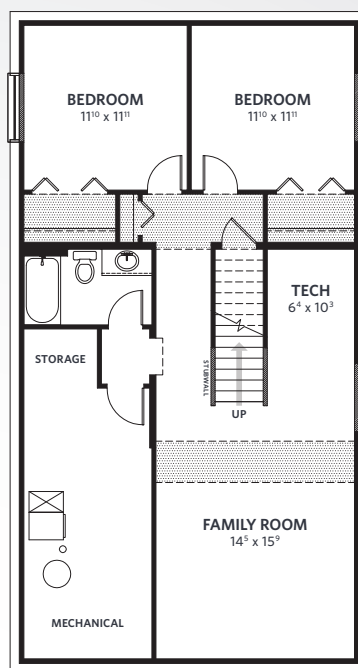
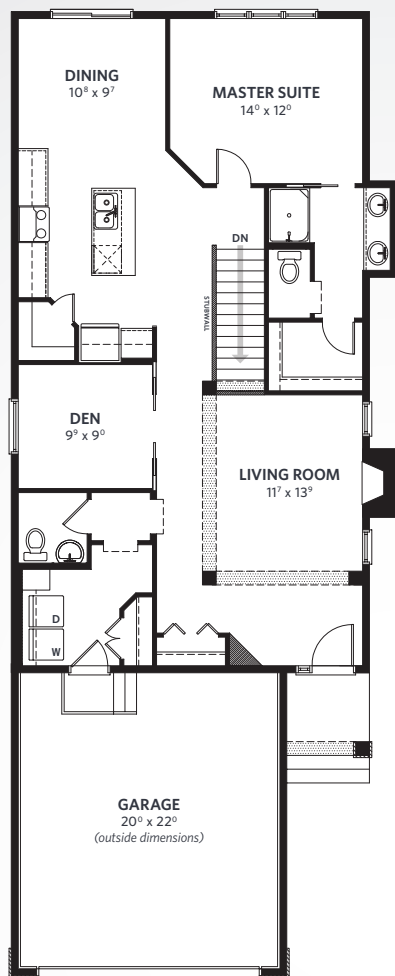


1272 + 951 sqft |  26' |  2 |  3 |  2.5

234 LEGACY HEIGHTS SE, CALGARY AB

# THE CRESSWELL

# \$499,000



1272 SQFT  
**MAIN** 

951 SQFT  
**LOWER** 

## FEATURES



### Premium Finishes

Granite countertops and undermount sinks in both the Kitchen as well as the Ensuite add an extra level of luxury.



### Hardwood & Tile Throughout

The hardwood throughout the main floor and tile in the bathrooms and Laundry are as beautiful as they are durable.



### Elegant Woodwork

Wood spindled railing and a stained maple fireplace mantle bring warmth to the common areas of the home.



### Oversize Garage

With an extra 2' of width over the standard Juniper, the garage is perfect for two vehicles as well as a workbench or storage shelving.



### 98% Efficient Furnace

The ultimate "under the hood" performance, the home's mechanical systems will keep you comfortable and save you money.



### Kitchen Potlights

Additional potlights installed in the Kitchen make for a brighter, more inviting space to entertain or prepare evening meals.